

FLP-PV1000/Y

SPD - for DC and PV / SPD PV type 1 / MOV

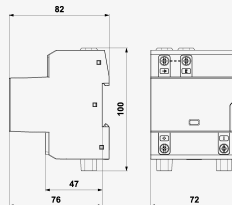
Lightning current arrester and surge arrester for PV systems

visual fault signalling

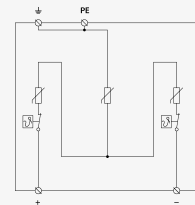
- varistor lightning current arrester and surge arrester in 'Y' connection
- for protection of PV systems on the roofs, where the separating spark-over distance is not kept (connection to LPS)
- maximum continuous operating voltage for PV application: $UCPV \geq 1.2 \times UOC\ STC$



Product dimensions



Basic circuit diagram



| Parameter name | | Parameter value |
|--|---------------------|-----------------------|
| Type of SPD | | PV T1, PV T2 |
| Mounting | | DIN rail 35 mm |
| Maximum operating voltage mode +/-PE, -/PE | U_{CPV} | 1 050.00 V DC |
| Short-circuit current rating | I_{SCPV} | 10 000 A DC |
| Residual current mode +/-PE, -/PE | I_{PE} | 1.000 mA AC |
| Residual current mode +/-PE, -/PE | I_{PE} | 0.010 mA DC |
| Total discharge current (10/350 μ s) | $I_{Total(10/350)}$ | 12.50 kA |
| Lightning impulse current (10/350 μ s) | I_{imp} | 6.25 kA |
| Total discharge current (8/20 μ s) | $I_{Total(8/20)}$ | 80.00 kA |
| Nominal discharge current (8/20 μ s) | I_n | 20.00 kA |
| Maximum discharge current (8/20 μ s) | I_{max} | 40.00 kA |
| Voltage protection level mode +/- | U_p | 3.80 kV |
| Voltage protection level mode +/-PE, -/PE | U_p | 3.80 kV |
| Response time | t_a | 25 ns |
| Cross-section of connected conductors solid (min) | | 4.00 mm ² |
| Cross-section of connected conductors solid (max) | | 35.00 mm ² |
| Cross-section of connected conductors stranded (min) | | 2.50 mm ² |

| | |
|--|---------------------------|
| Cross-section of connected conductors stranded (max) | 25.00 mm ² |
| Fault indication | red indication field |
| Degree of protection | IP 20 |
| Range of ambient temperatures (min/max) | -40 / 80 °C |
| According to standard | EN 61643-31, IEC 61643-31 |
| ETIM Class | EC001457 |
| Customs tariff number | 85363090 |
| EAN | 8595090542018 |
| Order number | A04201 |

SALTEK s.r.o., Drážďanská 561/85, 400 07 Ústí nad Labem, CZ | +420 475 655 511 | info@saltek.cz | www.saltek.eu
Technická podpora: 800 818 818 | podpora@saltek.cz

22.01.2025 -
09:14:54