

DM-024/1 3R DJ

SPD - for data, signalling and telecommunications lines / I&C / ST2+3 (DM) - compact

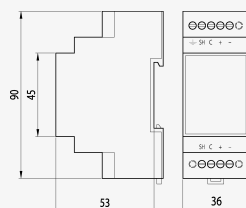
Surge protection for 3-core signalling lines

coupling impedance (R – resistance)

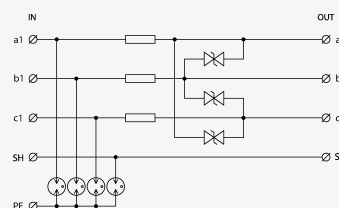
- coarse and fine surge protection for 3-core signalling lines
- installation close to protected equipment
- for protection of communication interfaces of I&C, electronic security and fire detection systems, etc. (mainly for RS-485 interfaces) against impact of surge voltage
- coarse and fine surge protection in differential mode (core – core) and coarse protection in common mode (core – PE)



Product dimensions



Basic circuit diagram



Parameter name	Parameter value
Type of SPD	C2,C3
Location of SPD	ST 2+3
Mounting	DIN rail 35 mm
Nominal voltage	U_n 24 V DC
Maximum operating voltage	U_c 20.60 V AC
Maximum operating voltage	U_c 29.10 V DC
Nominal load current	I_L 0.060 A
Threshold frequency core-core	f 3.40 MHz
Serial resistance per core	R 6.80 Ω
C2 nominal discharge current (8/20 μ s) per core	I_n 10.00 kA
C2 voltage protection level mode core-PE at I_n	U_p 350 V

C2 voltage protection level mode core-core at In	U_p	50 V
C3 voltage protection level mode core-PE at 1 kV/ μ s	U_p	650 V
C3 voltage protection level mode core-core at 1 kV/ μ s	U_p	40 V
Response time core-core	t_a	1 ns
Response time core-PE	t_a	100 ns
Connection (input - output)		terminals-terminals
Cross-section of connected conductors solid (max)		4.00 mm ²
Cross-section of connected conductors stranded (max)		2.50 mm ²
Degree of protection		IP 20
Range of ambient temperatures (min/max)		-40 / 80 °C
According to standard		EN 61643-21+A1,A2:2013, IEC 61643-21+A1,A2:2012
ETIM Class		EC001625
Customs tariff number		85363010
EAN		8595090512349
Order number		A01234