

VL-B75 F/F

SPD - for data, signalling and telecommunications lines / ICT / Video networks (VL)

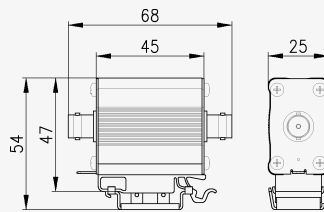
Surge protection eg. for video systems

BNC connectors, 75 ohm

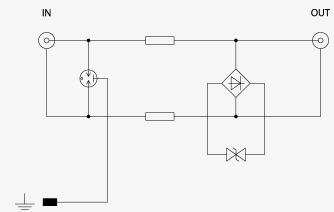
- combination of coarse and fine protection for video circuits
- installation close to protected equipment
- for protection of video systems, CCTV, etc. against surge voltage
- in the scope of delivery: universal plastic adapter for mounting on DIN rail and GND 2 holder



Product dimensions



Basic circuit diagram



| Parameter name | | Parameter value |
|---|-------|-----------------|
| Type of SPD | | C2,C3 |
| Location of SPD | | ST 2+3 |
| Mounting | | DIN rail 35 mm |
| Maximum operating voltage | U_c | 6.00 V AC |
| Maximum operating voltage | U_c | 8.50 V DC |
| Nominal load current | I_L | 0.060 A |
| Serial resistance per core | R | 0.27 Ω |
| C2 nominal discharge current (8/20 μ s) SH-PE | I_n | 5.00 kA |
| C2 nominal discharge current (8/20 μ s) core-SH | I_n | 5.00 kA |
| C2 voltage protection level mode SH-PE at In | U_p | 350 V |
| C2 voltage protection level mode core-SH at In | U_p | 150 V |
| C3 voltage protection level mode SH-PE at 1 kV/ μ s | U_p | 350 V |

| | | |
|---|-------|---|
| C3 voltage protection level mode core-SH at 1 kV/ μ s | U_p | 35 V |
| Response time core-SH | t_a | 1 ns |
| Response time SH-PE | t_a | 100 ns |
| Connection (input - output) | | BNC 75 |
| Degree of protection | | IP 20 |
| Range of ambient temperatures (min/max) | | -40 / 80 °C |
| According to standard | | EN 61643-21+A1,A2:2013, IEC 61643-21+A1,A2:2012 |
| ETIM Class | | EC001625 |
| Customs tariff number | | 85363010 |
| EAN | | 8595090533764 |
| Order number | | A03376 |

SALTEK s.r.o., Drážďanská 561/85, 400 07 Ústí nad Labem, CZ | +420 475 655 511 | info@saltek.cz | www.saltek.eu
 Technická podpora: 800 818 818 | podpora@saltek.cz

23.02.2025 -
03:49:54