

DL-ISDN RJ45

SPD - for data, signalling and telecommunications lines / ICT /

Telecommunications

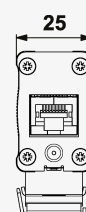
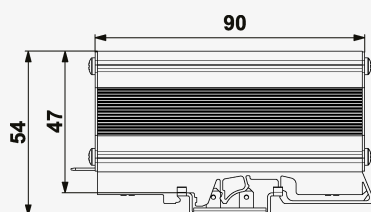
Surge protection for ISDN telecommunication line

RJ45 sockets

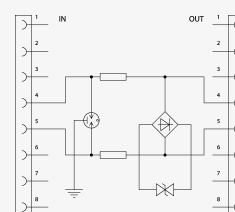
- combination of coarse and fine protection for ISDN lines
- for protection of one pair of ISDN line in telecommunication equipment
- in the scope of delivery: universal plastic adapter for mounting on DIN rail and GND 2 holder



Product dimensions



Basic circuit diagram



| Parameter name | Parameter value | |
|---|-----------------|---------------|
| Type of SPD | C2,C3 | |
| Location of SPD | ST 2+3 | |
| Mounting | DIN rail 35 mm | |
| Maximum operating voltage | U_c | 86.00 V AC |
| Maximum operating voltage | U_c | 121.00 V DC |
| Serial resistance per core | R | 6.80 Ω |
| C2 nominal discharge current (8/20 μ s) per core | I_n | 2.50 kA |
| Nominal load current | I_L | 0.060 A |
| C2 voltage protection level mode core-PE at I_n | U_p | 300 V |
| C2 voltage protection level mode core-core at I_n | U_p | 270 V |
| C3 voltage protection level mode core-PE at 1 kV/ μ s | U_p | 400 V |
| C3 voltage protection level mode core-core at 1 kV/ μ s | U_p | 180 V |
| Response time core-core | t_a | 1 ns |
| Response time core-PE | t_a | 100 ns |

| | |
|---|---|
| Connection (input - output) | RJ 45/RJ 45 |
| Degree of protection | IP 20 |
| Range of ambient temperatures (min/max) | -40 / 80 °C |
| According to standard | EN 61643-21+A1,A2:2013, IEC 61643-21+A1,A2:2012 |
| ETIM Class | EC000943 |
| Customs tariff number | 85363010 |
| EAN | 8595090533825 |
| Order number | A03382 |

SALTEK s.r.o., Drážďanská 561/85, 400 07 Ústí nad Labem, CZ | +420 475 655 511 | info@saltek.cz | www.saltek.eu
Technická podpora: 800 818 818 | podpora@saltek.cz

22.12.2024 -
11:43:49