

DL-10G-POE-M

SPD - for data, signalling and telecommunications lines / ICT / Ethernet and PoE - for 19" RACK

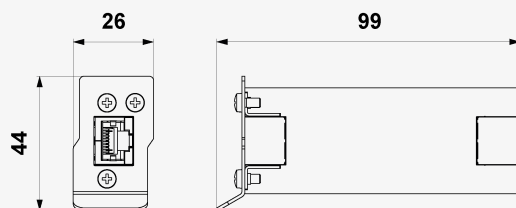
SPD for high-speed Ethernet networks (up to Cat.6A)

LPZ 0 and higher, for high-speed Ethernet networks with PoE

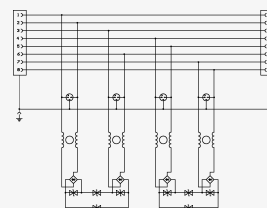
- combination of coarse and fine protection of Ethernet line with PoE
- installation at the entry of the line into building or close to the protected equipment, at the boundary of LPZ 0 and LPZ 1 or higher
- for protection of Ethernet line with PoE (Power over Ethernet) against surge voltage
- suitable for all PoE types - PoE/PoE+/PoE++ (IEEE 802.3 af/at/bt)
- installation into DL-PL-RACK-1U box



Product dimensions



Basic circuit diagram



Parameter name		Parameter value
Type of SPD		D1,C2,C3
Location of SPD		ST 1+2+3
Mounting		DL-PL-RACK-1U
Maximum operating voltage core-core	U_c	8,50 V DC
Maximum operating voltage pair-pair (POE)	U_c	58,00 V DC
Nominal load current per core at 25 °C	I_L	0.5 A
Treshold frequency core-core	f	500.00 MHz
Insertion attenuation at treshold frequency		3.20 dB
C2 nominal discharge current (8/20 μ s) core-core	I_n	0.15 kA
C2 nominal discharge current (8/20 μ s) core-PE	I_n	1.25 kA
C2 nominal discharge current (8/20 μ s) pair-pair (POE)	I_n	0.15 kA
D1 total discharge current (10/350 μ s) cores-PE	I_{Total}	2.00 kA
C2 total discharge current (8/20 μ s) cores-PE	I_{Total}	10.00 kA

C2 voltage protection level mode core-core (@Uoc/In)	U_p	60,00 V (0,3 kV / 0,15 kA)
C2 voltage protection level mode core-PE (@Uoc/In)	U_p	700,00 V (2,5 kV / 1,25 kA)
C2 voltage protection level mode pair-pair (POE) (@Uoc/In)	U_p	90,00 V (0,3 kV / 0,15 kA)
C3 voltage protection level mode core-core (@In - 1 kV/ μ s)	U_p	§45,00 V (10 A)
C3 voltage protection level mode core-PE (@In - 1 kV/ μ s)	U_p	500,00 V (10 A)
C3 voltage protection level mode pair-pair (POE) (@In - 1 kV/ μ s)	U_p	85,00 V (10 A)
Response time core-core	t_a	1 ns
Response time core-PE	t_a	100 ns
Connection (input - output)		RJ 45/RJ 45
Degree of protection		IP 30 (without connectors IP 10)
Range of ambient temperatures (min/max)		-10 / 50 °C
Humidity		15 - 85 %
According to standard		EN 61643-21+A1,A2:2013, IEC 61643-21+A1,A2:2012
Customs tariff number		85363010
EAN		8595090541813
Order number		A04181