

DMP-024-V/1-FR1

SPD - for data, signalling and telecommunications lines / I&C / Supply (DP and DMP) - with signalling line

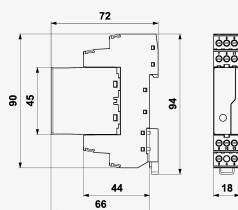
Combination of surge protections for signal and supply lines

pluggable module, coupling impedance (R – resistance) in part of data, line separated from protective earth via GDT

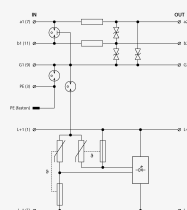
- combination of two-stage surge protection of 2-core signalling line in data part and surge protection for ELV in supply part
- installation close to protected equipment
- for protection of interfaces of I&C, electronic security and fire detection systems, etc., mainly for measuring circuits and sensors where signal and supply are transmitted in one cable, against surge voltage



Product dimensions



Basic circuit diagram



Parameter name	Parameter value
Cross-section of connected conductors solid (min)	0.14 mm ²
Cross-section of connected conductors solid (max)	4.00 mm ²
Cross-section of connected conductors stranded (min)	0.14 mm ²
Cross-section of connected conductors stranded (max)	2.50 mm ²
Fault indication	red indicator
Degree of protection	IP 20
Range of ambient temperatures (min/max)	-40 / 70 °C
Humidity	5 - 95 %
According to standard	EN 61643-21+A1,A2:2013, IEC 61643-21+A1,A2:2012
ETIM Class	EC001473

Plug module		DMP-024-V/1-0
Nominal voltage	U_n	24 V AC
Maximum operating voltage	U_c	25.00 V AC
Maximum operating voltage	U_c	36.00 V DC
Nominal load current	I_L	16.000 A
Maximum overcurrent protection		16 A gL/gG nebo B 16 A
C2 nominal discharge current (8/20 μ s) core-core	I_n	2.00 kA
Test voltage L+ - L-		4.0 kV
Test voltage L+(L-)-PE		4.0 kV
Test voltage M-PE		4.0 kV
voltage protection level L+ - L-		0.13 kV
voltage protection level L+(L-)-PE		0.95 kV
voltage protection level M-PE		0.75 kV
C2 voltage protection level mode M-PE at I_n		750.00 V
C2 voltage protection level mode core-PE at I_n	U_p	950 V
C2 voltage protection level mode core-core at I_n	U_p	230 V
Response time L+ - L-		25 ns
Response time L+(L-)-PE		100 ns
Response time M-PE		100 ns
Nominal voltage	U_n	24 V DC
Maximum operating voltage	U_c	25.00 V AC
Maximum operating voltage	U_c	36.00 V DC
Nominal load current	I_L	1.000 A
Threshold frequency core-core	f	4.00 MHz
Serial resistance per core	R	0.80 Ω
C2 nominal discharge current (8/20 μ s) GND-PE		10.00 kA
C2 nominal discharge current (8/20 μ s) per core	I_n	10.00 kA
C2 total discharge current (8/20 μ s) cores-PE	I_{Total}	20.00 kA
C3 nominal discharge current (10/1000 μ s) GND-PE		10.00 A
C3 nominal discharge current (10/1000 μ s) core-PE		10.00 A
C3 nominal discharge current (10/1000 μ s) core-core	I_n	10 A

C3 voltage protection level mode GND-PE at 1 kV/ μ s		550.00 V
C3 voltage protection level mode core-GND at 1 kV/ μ s		46.00 V
C3 voltage protection level mode core-core at 1 kV/ μ s	U_p	46 V
Response time core-core	t_a	1 ns
Response time core-GND		1 ns
Response time GND-PE		100 ns
Customs tariff number		85363010
EAN		8595090557999
Order number		A05799

SALTEK s.r.o., Dráždanská 561/85, 400 07 Ústí nad Labem, CZ | +420 475 655 511 | info@saltek.cz | www.saltek.eu
 Technická podpora: 800 818 818 | podpora@saltek.cz

22.01.2025 -
05:14:09