

# DM-012/1-RB

## SPD - for data, signalling and telecommunications lines / I&C / ST2+3 (DM) - terminal block

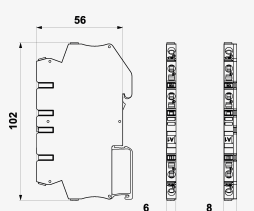
Surge protection for 2-core signalling networks

coupling impedance (resistance), screwless terminals

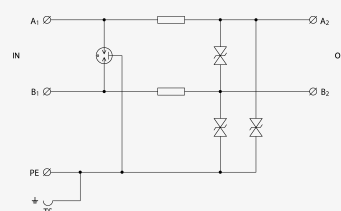
- coarse and fine surge protection for 2-core signalling networks
- installation close to protected equipment
- for protection of communication interfaces, mainly the RS-485 lines, of I&C, electronic security and fire detection systems, etc. against impact of surge voltage
- coarse and fine surge protection in differential mode (core – core) and common mode (core – PE)



Product dimensions



Basic circuit diagram



Parameter name	Parameter value
Type of SPD	<b>C2,C3</b>
Location of SPD	<b>ST 2+3</b>
Mounting	<b>DIN rail 35 mm</b>
Nominal voltage	<b>12 V DC</b>
Maximum operating voltage	<b>11.00 V AC</b>
Maximum operating voltage	<b>16.00 V DC</b>
Nominal load current	<b>0.500 A</b>
Treshold frequency core-core	<b>2.00 MHz</b>
Serial resistance per core	<b>1.60 Ω</b>
D1 impulse discharge current (10/350 μs) per core	<b>0.50 kA</b>

D1 total discharge current (10/350 $\mu$ s) cores-PE	$I_{Total}$	1.00 kA
C2 nominal discharge current (8/20 $\mu$ s) per core	$I_n$	5.00 kA
C2 total discharge current (8/20 $\mu$ s) cores-PE	$I_{Total}$	10.00 kA
C2 voltage protection level mode core-PE at $I_n$	$U_p$	40 V
C2 voltage protection level mode core-core at $I_n$	$U_p$	28 V
C3 voltage protection level mode core-PE at 1 kV/ $\mu$ s	$U_p$	20 V
C3 voltage protection level mode core-core at 1 kV/ $\mu$ s	$U_p$	20 V
Response time core-core	$t_a$	1 ns
Response time core-PE	$t_a$	1 ns
Connection (input - output)	screwless terminals/screwless terminals	
Cross-section of connected conductors solid (min)	0.08 mm <sup>2</sup>	
Cross-section of connected conductors solid (max)	4.00 mm <sup>2</sup>	
Cross-section of connected conductors stranded (min)	0.08 mm <sup>2</sup>	
Cross-section of connected conductors stranded (max)	2.50 mm <sup>2</sup>	
Degree of protection	IP 20	
Range of ambient temperatures (min/max)	-40 / 70 °C	
According to standard	EN 61643-21+A1,A2:2013, IEC 61643-21+A1,A2:2012	
ETIM Class	EC001625	
Customs tariff number	85363010	
EAN	8595090560586	
Order number	A06058	