

# DMLF-024/1-RB

## SPD - for data, signalling and telecommunications lines / I&C / Specials - RFI filter

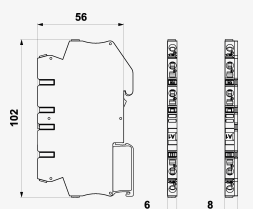
Surge protection for low-frequency 2-core signalling networks

coupling impedance (inductance), screwless terminals

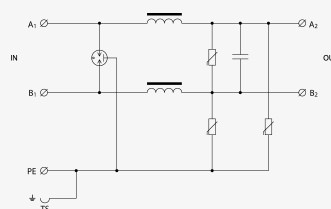
- coarse and fine surge protection for low-frequency 2-core signalling networks
- installation close to protected equipment
- for protection of analogue measuring lines in the areas with RF disturbance
- coarse and fine surge protection in differential mode (core – core) and common mode (core – PE)



Product dimensions



Basic circuit diagram



Parameter name	Parameter value
Type of SPD	<b>C2</b>
Location of SPD	<b>ST 2</b>
Mounting	<b>DIN rail 35 mm</b>
Nominal voltage $U_n$	<b>24 V DC</b>
Maximum operating voltage $U_c$	<b>31.00 V DC</b>
Nominal load current $I_L$	<b>0.100 A</b>
Threshold frequency core-core $f$	<b>0.07 MHz</b>
D1 impulse discharge current (10/350 $\mu$ s) per core $I_{imp}$	<b>0.50 kA</b>
D1 total discharge current (10/350 $\mu$ s) cores-PE $I_{Total}$	<b>1.00 kA</b>
C2 nominal discharge current (8/20 $\mu$ s) per core $I_n$	<b>5.00 kA</b>
C2 total discharge current (8/20 $\mu$ s) cores-PE $I_{Total}$	<b>10.00 kA</b>
C2 voltage protection level mode core-PE at $I_n$ $U_p$	<b>80 V</b>

C2 voltage protection level mode core-core at In	$U_p$	65 V
C3 voltage protection level mode core-PE at 1 kV/ $\mu$ s	$U_p$	55 V
C3 voltage protection level mode core-core at 1 kV/ $\mu$ s	$U_p$	55 V
Response time core-core	$t_a$	25 ns
Response time core-PE	$t_a$	25 ns
Connection (input - output)	screwless terminals/screwless terminals	
Cross-section of connected conductors solid (min)	0.08 mm <sup>2</sup>	
Cross-section of connected conductors solid (max)	4.00 mm <sup>2</sup>	
Cross-section of connected conductors stranded (min)	0.08 mm <sup>2</sup>	
Cross-section of connected conductors stranded (max)	2.50 mm <sup>2</sup>	
Degree of protection	IP 20	
Range of ambient temperatures (min/max)	-40 / 70 °C	
According to standard	EN 61643-21+A1,A2:2013, IEC 61643-21+A1,A2:2012	
ETIM Class	EC001625	
Customs tariff number	85363010	
EAN	8595090560692	
Order number	A06069	