

DMG-024-V/1-4FR1-DIF

SPD - for data, signalling and telecommunications lines / I&C / ST2+3 (DM) - pluggable

Surge protection in differential mode for max. 4-core signalling lines

pluggable module, coupling impedance (R – resistance), shielding (G) separated from protective earth via GDT

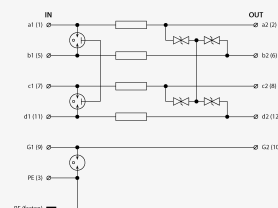
- coarse and fine surge protection for max. 4-core signalling lines
- installation close to protected equipment
- for protection of communication interfaces of I <(>&<)>C, electronic security and fire detection systems, etc. (mainly for RS-485 interfaces) against impact of surge voltage
- coarse and fine surge protection only in differential mode (core – core)



Product dimensions



Basic circuit diagram



Parameter name	Parameter value
Type of SPD	C2
Location of SPD	ST 2+3
Mounting	DIN rail 35 mm
Nominal voltage	U_n 24.00 V DC
Maximum operating voltage	U_c 25.00 V AC
Maximum operating voltage	U_c 36.00 V DC
Nominal load current	I_L 1.000 A
Threshold frequency core-core	f 6.00 MHz
Serial resistance per core	R 0.80 Ω
C2 nominal discharge current (8/20 μ s) GND-PE	I_n 10.00 kA
C2 nominal discharge current (8/20 μ s) per core	I_n 10.00 kA

C3 voltage protection level mode GND-PE at 1 kV/ μ s	U_p	550.00 V
C3 voltage protection level mode core-core at 1 kV/ μ s	U_p	46.00 V
Response time core-core	t_a	1 ns
Response time GND-PE	t_a	100 ns
Connection (input - output)		terminals-terminals
Cross-section of connected conductors solid (min)		0.14 mm ²
Cross-section of connected conductors solid (max)		4.00 mm ²
Cross-section of connected conductors stranded (min)		0.14 mm ²
Cross-section of connected conductors stranded (max)		2.50 mm ²
Degree of protection		IP 20
Range of ambient temperatures (min/max)		-40 / 70 °C
According to standard		EN 61643-21+A1,A2:2013, IEC 61643-21+A1,A2:2012
ETIM Class		EC001625
Customs tariff number		85363010
EAN		8595090562818
Order number		A06281