

CZ-275-A

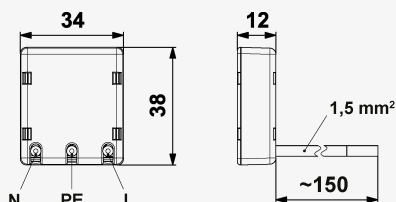
SPD - for low voltage / SPD type 3 / Build in

Module with surge protection for additional installation
acoustic fault signalling

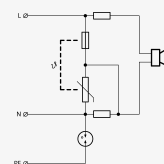
- SPD for additional installation to devices or equipments
- installation to LV installations, close to protected equipment
- for protection of all LV equipments against surge voltage
- non-symmetrical connection



Product dimensions



Basic circuit diagram



Parameter name	Parameter value
Type of SPD	T3
Mounting	installation box
Nominal voltage	U_n 230 V AC
Maximum operating voltage L-N	U_c 275.00 V AC
Maximum operating voltage N-PE	U_c 255.00 V AC
Type of network	TN TT
Maximum overcurrent protection	B 16 A
Short-circuit current rating	I_{SCCR} 1.5 kA
Nominal discharge current (8/20 μ s) L-N	I_n 3.00 kA
Nominal discharge current (8/20 μ s) N-PE	I_n 6.00 kA
Test voltage L-N	U_{oc} 6.0 kV
Test voltage N-PE	U_{oc} 12.0 kV
Voltage protection level mode L-N	U_p 1.45 kV
Voltage protection level mode N-PE	U_p 1.50 kV
Response time L-N	t_a 25 ns
Response time N-PE	t_a 100 ns
TOV 5 s L-N	335 V

TOV 5 s L-PE	440 V
TOV characteristic (TOV 5 s)	withstand
TOV 120 min L-N	440 V
TOV characteristic (120 min)	withstand
TOV 200 ms L-PE	1 455 V
TOV 200 ms N-PE	1 200 V
TOV characteristic (TOV 200 ms)	safe failure
Fault indication	acoustic signalling
Degree of protection	IP 20
Range of ambient temperatures (min/max)	-20 / 70 °C
According to standard	EN 61643-11:2012, IEC 61643-11:2011
ETIM Class	EC000942
Customs tariff number	85363010
EAN	8595090567370
Order number	A06737

SALTEK s.r.o., Drážďanská 561/85, 400 07 Ústí nad Labem, CZ | +420 475 655 511 | info@saltek.cz | www.saltek.eu
 Technická podpora: 800 818 818 | podpora@saltek.cz

08.01.2025 -
07:49:00